

INITIALS

KB

s. 16.00  
(3)

889058055

SUBDIVISION Echo Point Section I

LEGAL pt. 5/2 of SW 1/4 of S21, T17N, R5E

CROSS REFERENCE

DECLARATION

DHD/VOTD STAMP  
LAND SURVEYOR  
TOWNSHIP  
AUDITOR  
NOTARY

✓  
✓  
✓  
✓

RECEIVED FOR RECORD

08 JUL 16 AM 0:55

1274 ST JAMES  
HANDON COUNTY RECORDS

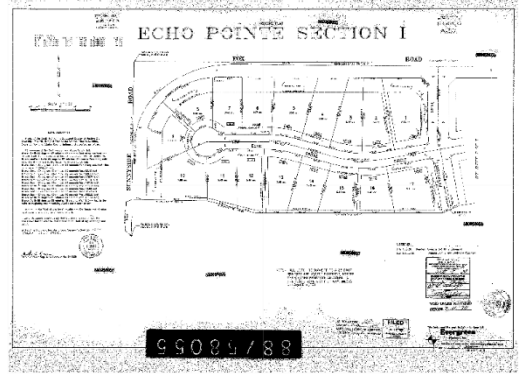
TOWNSHIP

Lawrence

RETURN TO:

Evergreen

353-6161



# ECHO POINTE SECTION I

PLAT DEEDS AND RESTRICTIONS

SECTION I

THESE DEEDS AND RESTRICTIONS ARE A PART OF THE PLAT OF ECHO POINTE SECTION I, TOWNSHIP 14N, RANGE 10E, MERIDIAN 10W, COUNTY OF HENRI, MISSOURI, AS SHOWN ON PLAT NO. 14, RECORDS AND RETURNS OF THE COUNTY CLERK OF SAID COUNTY, MISSOURI, AT PAGE 14, VOLUME 14, RECORDS AND RETURNS OF THE COUNTY CLERK OF SAID COUNTY, MISSOURI, DATED AND RECORDED AS ABOVE.

SECTION II

THESE DEEDS AND RESTRICTIONS ARE A PART OF THE PLAT OF ECHO POINTE SECTION I, TOWNSHIP 14N, RANGE 10E, MERIDIAN 10W, COUNTY OF HENRI, MISSOURI, AS SHOWN ON PLAT NO. 14, RECORDS AND RETURNS OF THE COUNTY CLERK OF SAID COUNTY, MISSOURI, AT PAGE 14, VOLUME 14, RECORDS AND RETURNS OF THE COUNTY CLERK OF SAID COUNTY, MISSOURI, DATED AND RECORDED AS ABOVE.

SECTION III

THESE DEEDS AND RESTRICTIONS ARE A PART OF THE PLAT OF ECHO POINTE SECTION I, TOWNSHIP 14N, RANGE 10E, MERIDIAN 10W, COUNTY OF HENRI, MISSOURI, AS SHOWN ON PLAT NO. 14, RECORDS AND RETURNS OF THE COUNTY CLERK OF SAID COUNTY, MISSOURI, AT PAGE 14, VOLUME 14, RECORDS AND RETURNS OF THE COUNTY CLERK OF SAID COUNTY, MISSOURI, DATED AND RECORDED AS ABOVE.

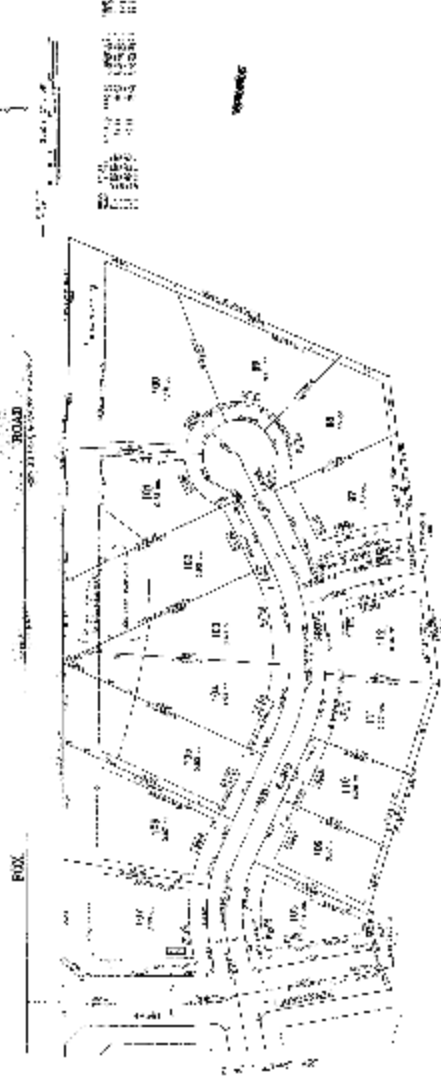
PLAT	VOLUME	PAGE
14	14	14

88/52055

RECORDED



# ECUIO POINTE SECTION I



95025788

LEGEND  
1. ALL DIMENSIONS ARE IN FEET  
2. ALL DIMENSIONS ARE TO CENTERLINE UNLESS OTHERWISE NOTED

NOT TO SCALE  
FOR INFORMATION ONLY  
SEE PLANS FOR DIMENSIONS  
AND NOTES

DATE: 11/11/11  
BY: [Signature]